

Generation scheduling proposal with closure of the DA MIBEL Market at 12h00

Index

- 1. Motivation of the proposal**
- 2. DA MIBEL Market current situation**
- 3. DA MIBEL Market with closure at 12h00 CET**
- 4. Actions required**
- 5. Action plan**

Motivation of the proposal

- As preliminary step for coupling the DA MIBEL Market and DA Central European Markets, EuroPEX and ENTSO-E undertake in the Florence Forum (May 2011) the commitment to establish by June 2012 the closure of the DA MIBEL Market at 12:00 hours CET



SWE: DA roadmap until 2015

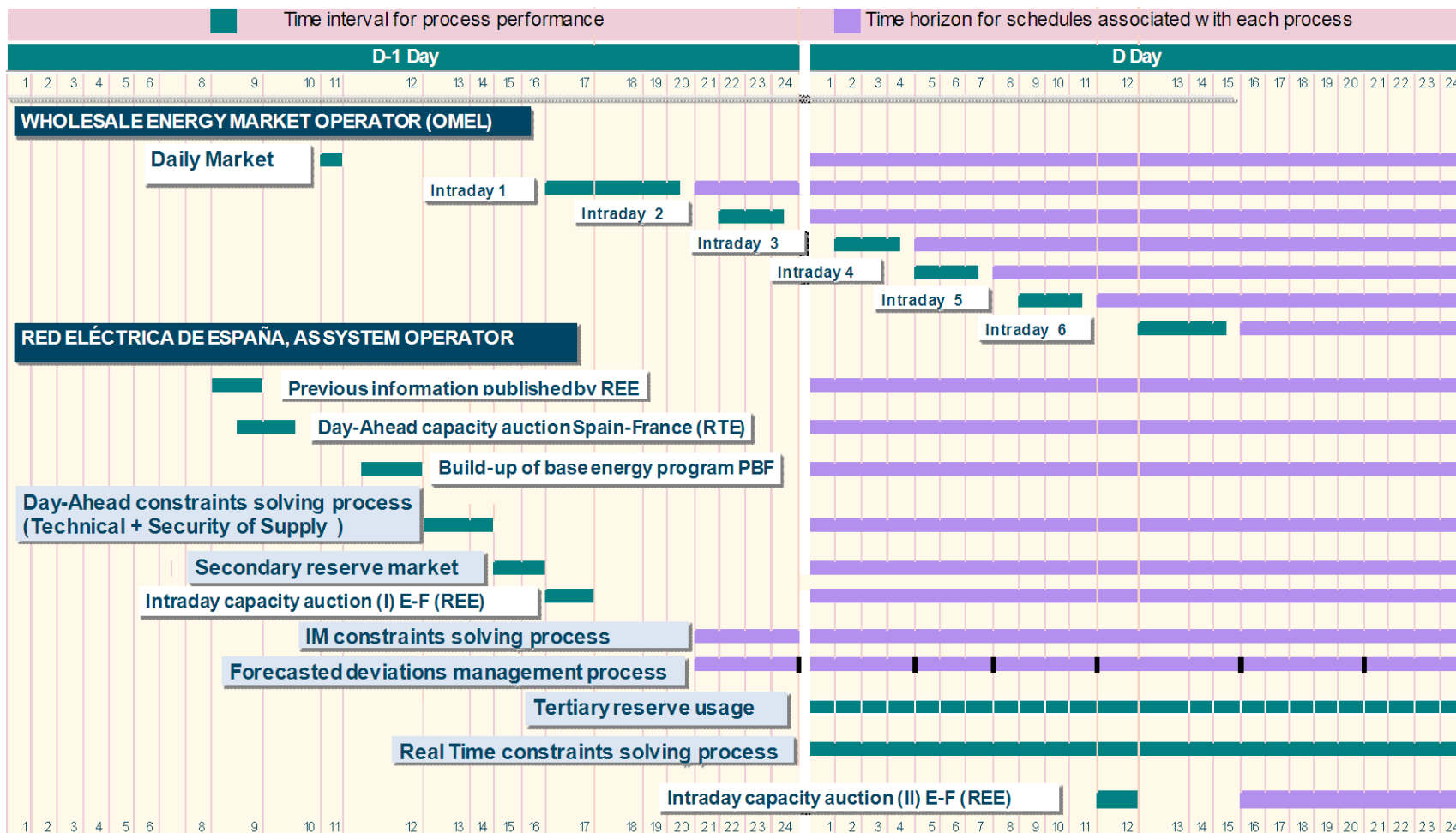
	2010	2011	2012	2013	2014	2015
Regional developments						
Proposal REE-REN-RTE-OMEL for DA MIBEL GCT change to 12h00 CET		■				
Identification and preparation of main required Regulatory and IT changes		■				
Implementation of required changes → DA MIBEL GCT at 12h00 CET in June 2012			■			
Single price coupling target						
Implementation of PCR algorithm in MIBEL (foreseen in July 2012)			■			
Joining other regions						
Process of coupling MIBEL with other regions from July 2012 to June 2013			■			

Index

1. Motivation of the proposal
2. Current situation
3. Proposal for DA MIBEL Market closure at 12h00 CET
4. Actions required
5. Action plan proposal

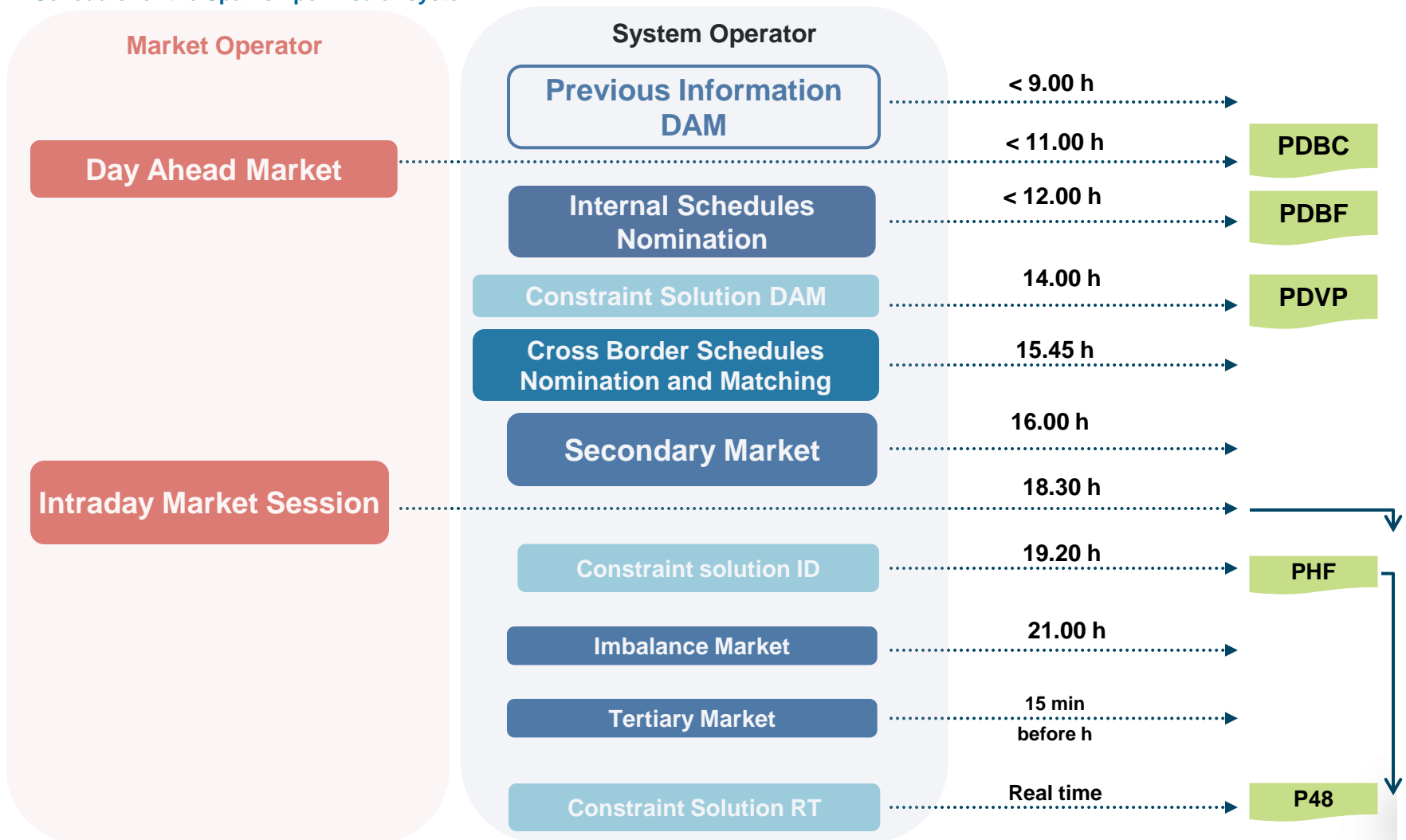
Current situation (I)

Schedule for the Spanish peninsular system



Current situation (II)

Schedule for the Spanish peninsular system



Current situation (III)

Schedule for the Spanish peninsular system

☐ PHF schedule publication after MI sessions:

	SESSION 1	SESSION 2	SESSION 3	SESSION 4	SESSION 5	SESSION 6
Gate opening	16:00	21:00	1:00	4:00	8:00	12:00
Gate closure	17:45	21:45	1:45	4:45	8:45	12:45
Matching	18:30	22:30	2:30	5:30	9:30	13:30
Programming Units schedule nomination and reception of breakdown in Physical Units	19:00	23:00	3:00	6:00	10:00	14:00
Constraints analysis.	19:10	23:10	3:10	6:10	10:10	14:10
Constraints resolution.						
PHF Publication	19:20	23:20	3:20	6:20	10:20	14:20
Programming Horizon	28 hours	24 hours	20 hours	17 hours	13 hours	9 hours
Time periods	21-24 (d-1) 1-24	1-24	5-24	8-24	12-24	16-24

Index

1. Motivation of the proposal
2. Current situation
3. Proposal for DA MIBEL Market closure at 12h00 CET
4. Actions required
5. Action plan proposal

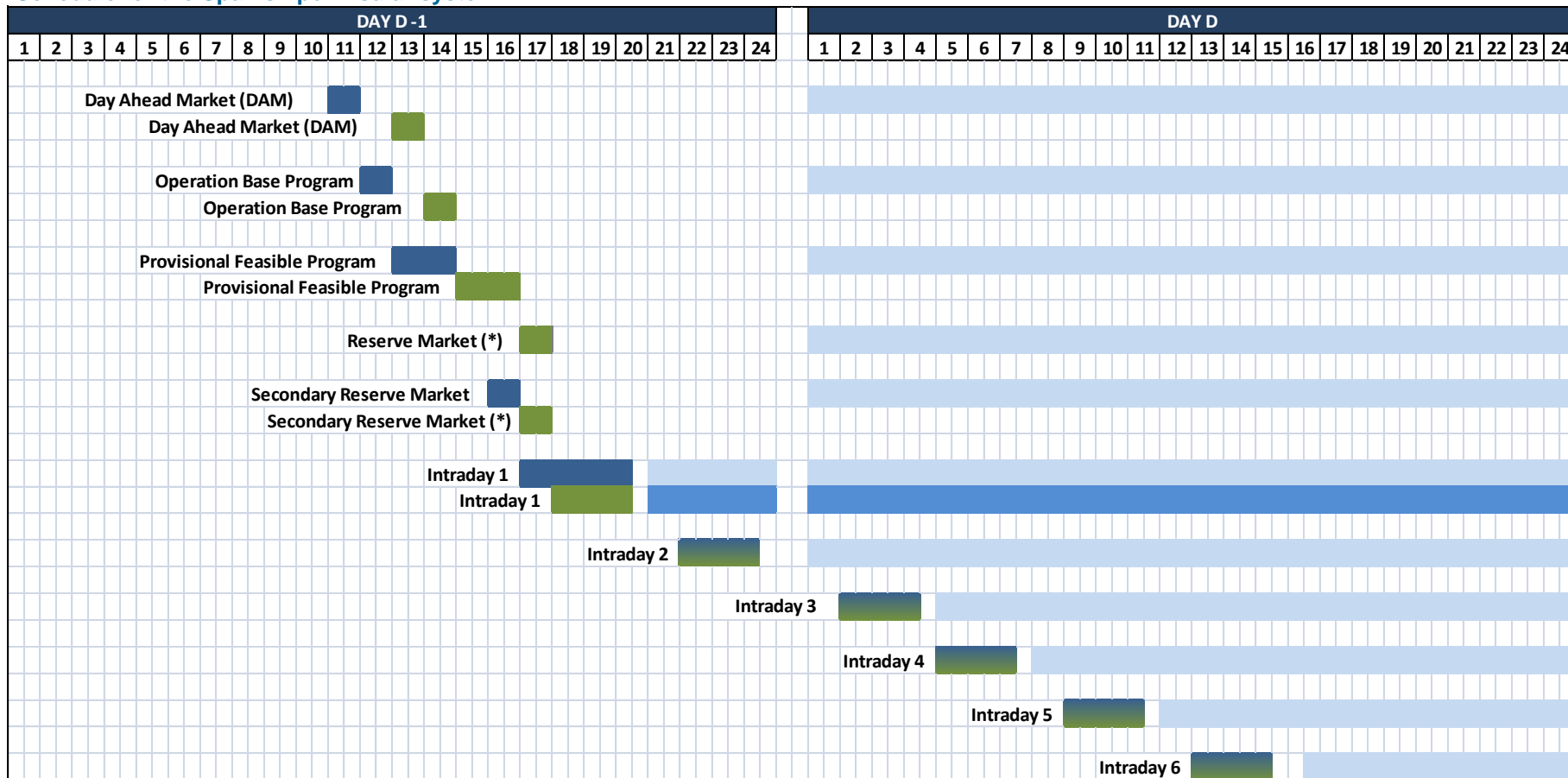
Proposal for DA MIBEL Market closure at 12h00 CET (I)

Schedule for the Spanish peninsular system

- ❑ The closure of the DA MIBEL Market at 12h00 implies a delay in the publication of PDVP until 16h00 (currently at 14h00).
- ❑ Following the PDVP publication, the Secondary Reserve Market takes place, which will be necessarily delayed
- ❑ Proposal:
 - Reduce one hour the time available for market allocation of secondary regulation
 - Reduce the time for the submission of bids at the 1st IM session to 45 minutes, as in the successive IM sessions
- ❑ From the 2nd session of IM MIBEL, the schedules would remain unchanged

Proposal for DA MIBEL Market closure at 12h00 CET (II)

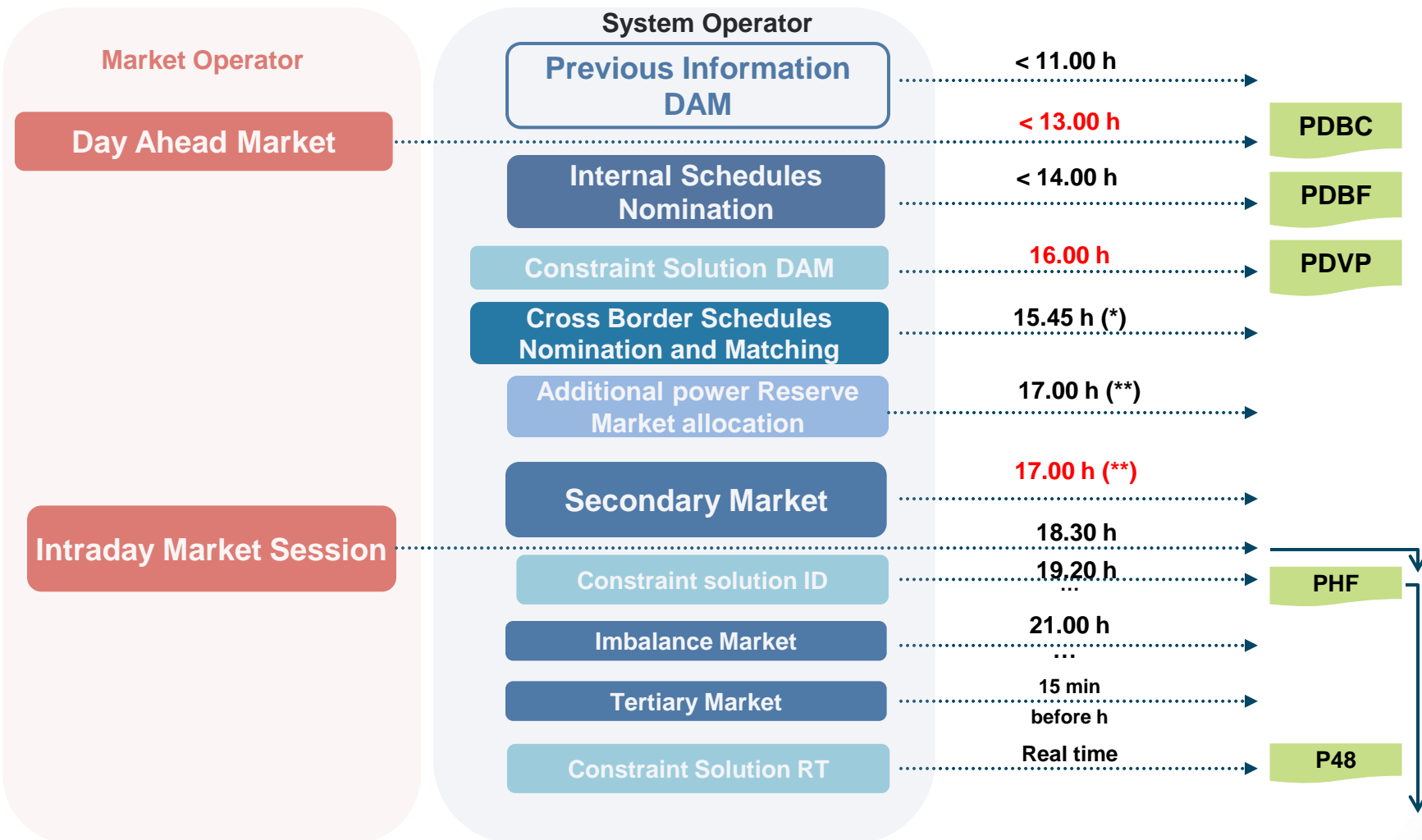
Schedule for the Spanish peninsular system



■ Current Situation
 ■ Clousure of DAM at 12h
 ■ Timeframe that applies to current DAM
 ■ Timeframe that applies to DAM with closure at 12h
■ Matching hourly intervals, current DAM and 12am DAM
 (*) These time schedules will be revised once the Reserve Market will be inforce

Proposal for DA MIBEL Market closure at 12h00 CET (III)

Schedule for the Spanish peninsular system



(*) Regulatory changes are required in the Spanish electrical system (**) These time schedules will be revised once the Reserve Market will be in force

Proposal for DA MIBEL Market closure at 12h00 CET (IV)

Schedule for the Spanish peninsular system

☐ PHF schedule publication after MI sessions

	SESSION 1	SESSION 2	SESSION 3	SESSION 4	SESSION 5	SESSION 6
Gate opening	16:00 17:00	21:00	1:00	4:00	8:00	12:00
Gate closure	17:45	21:45	1:45	4:45	8:45	12:45
Matching	18:30	22:30	2:30	5:30	9:30	13:30
PU nomination reception and program disintegration	19:00	23:00	3:00	6:00	10:00	14:00
Constraints analysis	19:10	23:10	3:10	6:10	10:10	14:10
Constraints resolution						
PHF Publication	19:20	23:20	3:20	6:20	10:20	14:20
Programming Horizon	28 hours	24 hours	20 hours	17 hours	13 hours	9 hours
Time Periods	21-24 (d-1) 1-24	1-24	5-24	8-24	12-24	16-24

Proposal for DA MIBEL Market closure at 12h00 CET (V)

Schedule for the Spanish peninsular system

☐ PHF schedule publication after MI sessions

	SESSION 1	SESSION 2	SESSION 3	SESSION 4	SESSION 5	SESSION 6
Gate opening	17:00	21:00	1:00	4:00	8:00	12:00
Gate closure	17:45	21:45	1:45	4:45	8:45	12:45
Matching	18:30	22:30	2:30	5:30	9:30	13:30
PU nomination reception and program disintegration	19:00	23:00	3:00	6:00	10:00	14:00
Constraints analysis.						
Constraints resolution.	19:10	23:10	3:10	6:10	10:10	14:10
PHF Publication	19:20	23:20	3:20	6:20	10:20	14:20
Programming Horizon	28 hours	24 hours	20 hours	17 hours	13 hours	9 hours
Time Periods	21-24 (d-1) 1-24	1-24	5-24	8-24	12-24	16-24

Proposal for DA MIBEL Market closure at 12h00 CET (VI)

Schedule for the Spanish peninsular system

☐ IFE Explicit auctions capacity allocation coordinated system (***)

	Day ahead auction (*) (D-1)	1 st Intraday auction (**) (D-1)	2 nd Intraday auction (D)
Nomination of LT (Monthly/Yearly) Capacity	7:45	15:00	10:25
SO-SO Nomination Matching process	7:55-8:05	15:35-15:40	10:35-10:40
Auction Specifications publication	8:35	16:05	11:05
Bids Reception gate opening	8:45	16:15	11:15
Bids Reception gate closure	9:15	16:45	11:45
Auction results communication to Market Participants	9:30	17:00	12:00
Allocated capacity communication to MP and OMIE	9:30	17:15	12:15

• (*) **Day ahead auction:**

- No time-schedule modification, as the Day Ahead auctions will be substituted by Market Coupling

• (**) **1st Intraday auction:**

- No time-schedule changes, as the international exchanges programs in the Base Program (PBF) must remain without modification in the Feasible Program (PVP), in order to respect the European matching time limits (Policy 2 ENTSO-E). Regulatory changes are required in the Spanish electrical system.

• (***) RTE is already agreed with this proposal

9th IG meeting. Madrid, November 3rd 2011

Index

1. Motivation of the proposal
2. Current situation
3. Proposal for DA MIBEL Market closure at 12h00 CET
4. Actions required
5. Action plan proposal

Actions required in the Spanish electrical system

□ Regulatory changes:

- ❖ Adjustment of several schedules in **MIBEL Operating Rules** → *OMIE proposal*
- ❖ **Modification of Annex Royal Decree 2351/2004**. International programs would not be modified in PDVP. Changes required in order to comply with the auction time limits of the European matching of the 1st Intraday, Policy 2, ENTSO-E → *REE proposal*
- ❖ Adjustment of several schedules in **Operation Procedures** → *REE proposal*

□ Changes in other documents:

❖ Schedule adjustments for **information exchange files**:

- Document for information files exchange between OS and OM
 - Document for information files exchange between OS and MP
 - Document for information files exchange between OM and MP
- } *REE proposal*
- } *OMIE proposal*

Actions required in the Portuguese electrical system

□ Regulatory changes:

- ❖ Modification of the **Operation Manual for the Global Management of the System** → *REN proposal*

□ Changes in other documents:

- ❖ **Schedule adjustments for information exchange files:**

- Document for information files exchange between REN and OMIE → *REN proposal*
- ❖ **Revision of the Annex of the Agreement between REN and OMIE** → *OMIE proposal*

Actions required in the Spanish/Portuguese electrical system

❑ Changes in other documents:

- ❖ Adjustments of several schedules **REN-REE Implementation Guide** → **REE proposal**

Index

1. Motivation of the proposal
2. Current situation
3. Proposal for DA MIBEL Market closure at 12h00 CET
4. Actions required
5. Action plan proposal

Action plan proposal

- **Before Friday November 18th, 2011:** Send the proposed changes and other documents modifications by each responsible (OMIE/REN/REE)
- **Before Monday December 12th, 2011:** Send internal comments to the received proposals
- **Before Wednesday January 18th, 2012:** Send modification proposals of Spanish Operation Procedures to the market participants and presentation of the proposed MIBEL Operating Rules to CAM for consultation.
- **Before Tuesday January 31st, 2012:** Conduct a joint presentation OMIE-REN-REE to inform Market Participants about DAM closure at 12h00 and regulatory changes required
- **Before Friday February 3rd, 2012:** Send to the Ministry the proposals of Operation Procedures of the Spanish electricity system and MIBEL Operating Rules
- **April 2012:** Testing Phase with Market Participants
- **June 2012:** Starting date for DA MIBEL Market closure at 12h00 CET

Development and Implementation of new Generation Programming Process with CGT of DA MIBEL Market at 12h00 CET

Main Milestones	2011					2012												
	16-31 OCT	1-15 NOV	16-30 NOV	1-15 DEC	16-31 DEC	1-15 JAN	16-31 JAN	1-15 FEB	16-28 FEB	1-15 MAR	16-31 MAR	1-15 APR	16-30 APR	1-15 MAY	16-31 MAY	1-15 JUN	16-30 JUN	
1. Joint proposal OMEL-REE-REN and road map for its implementation																		
a) Development of this joint proposal	█																	
b) Presentation of the joint proposal to RCC		█																
2. Identification and documentation of main required changes																		
a) Proposal of regulatory modifications		█	█	█														
b) Documentation of required IT system changes				█	█													
c) IT Specifications						█												
3. Información of the joint proposal to the Market Participants																		
a) Sending the proposed changes						█												
b) Performing an informational forum							█											
4. Implementation of required changes																		
a) Request of regulatory modifications							█											
b) IT Development								█	█	█	█	█						
c) Aprobation of regulatory modifications									█	█	█	█	█					
d) Testing Phase												█	█					
e) Final Test														█	█			
5. Go live																		█

OMIE



RED
ELÉCTRICA
DE ESPAÑA